


**Dr. Joan E. Leichter Dominick**  
**Copyright 2007**  
**Director of Portfolios for Student Success Programs &**  
**The Senior-Year Experience Program**  
<http://joandominick.com>


**Folio Thinking for First-Year Success:  
Using KSU Web 1.0 and KSU Web 2.0**



### Folio Thinking with Web 1.0 & Web 2.0

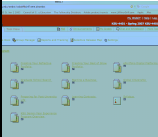
What is Folio Thinking? Why use Folio Thinking?

- ✧ Everybody Folio Thinks: Creating scrapbooks, websites, Facebook accounts are some examples of the process
- ✧ Folio Thinking is a way to Honor, Understand, and Connect Your Learning from Self to Global Society
- ✧ The 21st Century work world demands Life Long Learning Planning, Reflection, and Sharing
- ✧ Digital ease of sharing information one-way and across communities supports Folio Thinking
- ✧ Archive Your Learning for Career and Community Leverage
- ✧ Share Your Learning for Networking - Operational, Personal, & Strategic Goals



What is Web 1.0? How does KSU use Web 1.0?

- ✧ Web 1.0 One -Way Digital Activity
- ✧ Samples of Web 1.0 Desktop Publishing & Websites
- ✧ KSU Web 1.0: ITS Student & Alumni Web Pages, PTD Pocket ePortfolios , Career Services Online Career Portfolio OLCP



What is Web 2.0? How does KSU use Web 2.0?

- ✧ Web 2.0 Group Digital Activity: Networks of social communities & online collaborating
- ✧ Samples of Web 2.0: Open Source Internet use such as Facebook , Wikipedia , Pebble Pad,
- ✧ My Space, YouTube, Elgg, inCircle Alumni Groups, Flickr , etc.
- ✧ KSU Web 2.0 Vista

**Part One:**  
**Folio Thinking using KSU Web 1.0:**  
**Folio Thinking Individually**

**Folio Thinking with KSU Web 1.0:**  
Consult [http:// www.joandominick.com/foliothinking.html](http://www.joandominick.com/foliothinking.html)

**Folio Thinking with KSU Web 1.0**  
**Folio Thinking Individually**  
Honor, Understand & Connect Your Learning from Self to Global Society:  
RACCE College Portfolio Process-Reflect, Assess, Collect, Connect, Express

PTD Pocket E-Portfolio - Desktop Publishing

Online Career Portfolio - Career Services  
Internet Password Protected

ITS Web Folio - Internet

*FYE, SYE, Honors  
& KSU  
join forces to  
create these  
innovative  
E-Portfolio Formats*

*E-Portfolios designed for Interactivity of Formats*

***Creating the KSU 1101/1102 College Student E-Portfolio:  
Connect Your Learning Before, During, and After College***

Take your learning beyond the college transcript by designing and developing a KSU 1101/1102 College E-portfolio. Using the latest portfolio technology offered at KSU, you reflectively archive your learning experiences to honor, understand, and connect your learning and provide a networking opportunity for you to share your learning story for advising, choosing an academic major, internships, study abroad, career search, and global issues. The E-portfolio mirrors the current culture of the workforce and higher education, which demands that college students be able to manage their learning plan for continued education to keep current with the necessary expertise development in their technologically global worksites and communities.

The *folio thinking process* prepares students for life-long continued career development which demands an entrepreneurial approach of managing ones own progress as a knowledge worker in the 21<sup>st</sup> century. In our presentation we will share the academic approaches to creating e-

portfolios as passports to global citizenship by utilizing the *folio thinking* process for college seniors.

The *Folio Thinking Process* helps prepare you for the entrepreneurial thinking that you will need for college success and for entry to the 21<sup>st</sup> Century work world. You can archive life before, during, and what you hope to accomplish after college. It is a way to archive your learning so you can have a broader electronic view of your learning and share your story with the world! You are the star of your own learning story, so let's learn how to start the process of creating your KSU College E-Portfolio.

Your KSU 1101/1102 has distinct learning outcomes that can be easily documented and showcased in your e-portfolio. The learning outcomes are: *Study Skills, Academic/Cognitive Skills, Critical Thinking Skills, Connections with Faculty, Connections with Peers, Out-of-class Engagement, Knowledge of Campus, Knowledge of Academic Services, Managing Time & Priorities, Knowledge of Wellness, and Global Perspectives*. For more information on the KSU 1101/1102 Learning Outcomes, consult [http://ucac.kennesaw.edu/FYE\\_sub.html](http://ucac.kennesaw.edu/FYE_sub.html).

### **Let's Get Started: Creating Your KSU 1101/1102 College E-Portfolio**

The College Portfolio has five continual phases of development which help you design, deliver, and continually assess your learning history and learning plans: *Reflect, Assess, Collect, Connect, and Express – RACCE Portfolio Process*. By going through these continual phases of development of your College Student Portfolio you will have (1) a distinct archived history of your learning and plans for your future learning, which results in a *Reflective Portfolio/Private Portfolio* and (2) have the baseline to design and develop a *Best of Show Portfolio/Public Portfolio* to present your learning story and learning plans to society for first-year college success, advising, choosing an academic major, career search, graduate school, community work, entrepreneurial endeavors, and community service.

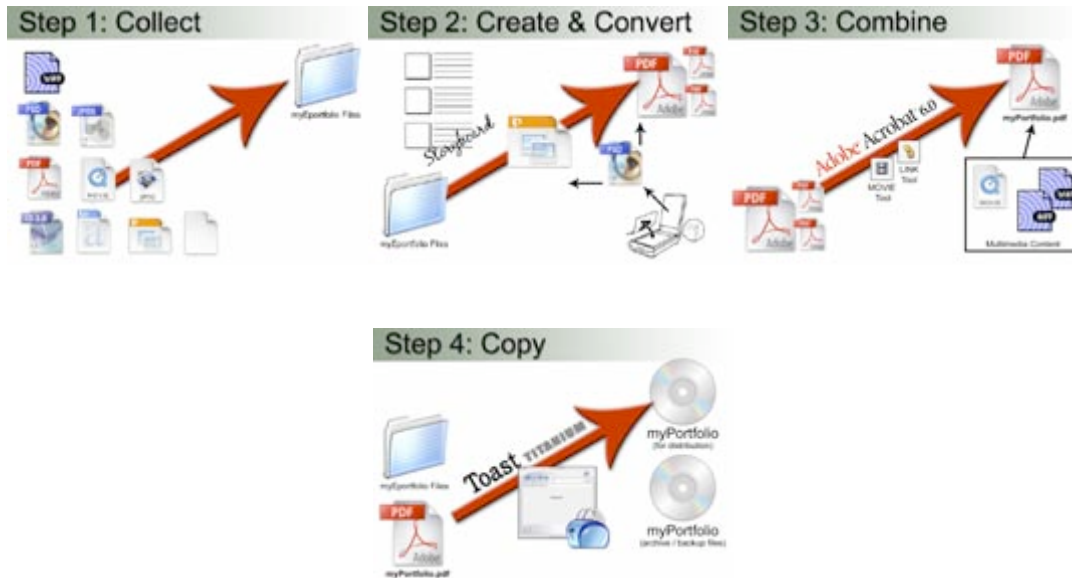
Your *Reflective Portfolio* includes the following three sections (1) *Reflect: Mapping Your College Learning Self-Assessment Instruments* (2) *Assess: Self-Assessment + Faculty Assessment + Peer Assessment + Stakeholder Assessment*, and (3) *Collect: Set up Reflective Portfolio Supporting Evidence File* which archives both your learning history and incorporates future learning plans.

Your *Best of Show E-Portfolio* is designed based on the information provided from the *Reflective Portfolio*, which include using the self-assessment learning instruments and the supporting evidence files. There are two phases of the *Best of Show E-Portfolio*. (1) *Connect: Develop the Mission, Design, and Format of the Best of Show E-Portfolio*, and (2) *Express: Present Portfolio to Public*. The three phases of planning for the *Best of Show E-Portfolio* are deciding on the mission of the portfolio, creating the design of the portfolio, and selecting an effective format for the portfolio.

## Part Two: Creating the Best of Show E-Portfolio\*

*\*From the PTD Pocket E-Portfolio Process –Institutional Desktop Publishing Website which provides the training which can be used for the Online Career Portfolio & ITS Web Folio Development*

<http://ptd.kennesaw.edu/eportfolio/intro.html>



Joining the emerging portfolio process trends in higher education, you learn about the three portfolio formats currently used at KSU, which are Career Center Online Career Portfolio, PTD Pocket E-Portfolio, and the ITS Web Folio. KSU provides the training for each of the three college e-portfolios formats. There is also a KSU Master Storyboard for the College E-Portfolio Process included in this chapter. This will help you with the design and delivery of your Best of Show E-Portfolio.

At KSU, you can produce a *Best of Show Portfolio* incorporating all three E-Portfolio formats which are (1) the PTD Pocket E-Portfolio designed and developed through the desk-top technology training provided by the Presentation Technology Center, and (2) KSU Institutional Online Career Portfolio housed in the department of Career Services, there by best utilizing the latest technology available for students to archive and showcase their learning history, talents, and future learning plans; and (3) the ITS Web Folio, which you will learn to develop your portfolio using Netscape Composer. The training session is required for the ITS Web Folio, what is optional is the creating a KSU Website/URL and the design and publishing of an ITS Web Folio Best of Show Portfolio

The PTD Pocket E-Portfolio allows the student to record their work on digital media and maintain their own portfolio files on CD and USB Pen 128mg. The Online Career

Portfolio is a web-based portfolio maintained by the student and monitored by the university. This allows the student an online filing system to showcase their learning history and can be sent in email format. The PTD Pocket E-Portfolio, Online Career Portfolio, and the ITS Web Folio will be cross-referenced providing a way for you to showcase your talents and skills in the area of academics, employment, technology, community service and more.

By using the *Folio Thinking Tutorial* in Part Three of this chapter, you learn how to utilize the **Cross Platform Capability** of the **OnLine Career Portfolio, Pocket E-Portfolio and /or if you chose, the ITS Web Folio**. Showcasing your Folio Thinking by clearly integrating the KSU Best of Show E-Portfolio Formats develops your learning story, integrates technology to best view your learning story, and increases the varying uses for your portfolio (i.e. Archiving college learning, academic advising, declaring an academic major, internships/coops, scholarship applications, employment, etc.)

- Upload CD PTD Pocket E-Portfolio to OnLine Career Portfolio
- Include the intranet address on the OnLine Career Portfolio on the PTD Pocket E-Portfolio and /or ITS Web Folio
- Create a “Technology” File Tab on the Online career portfolio listing all the technology training you took this in KSU 1101 this past semester

Once completed, your **College Learning Portfolio: *Reflective Portfolio and Best of Show Portfolio*** will help you honor, understand, and connect your learning for yourself and for your emerging role as college student and citizen leader. Part of a national academic movement in higher education, the **College Learning Portfolio** takes your learning beyond the college transcript and provides an empowering assessment format for you to archive your learning, assist you in better understanding the breadth and depth of your skills and talents, help you make better decisions about your future plans, and help other understand your talents, learning history, and your future potential as a citizen leader.

### **KSU College E-Portfolio Buffet\***

***\*Currently there are three e-portfolio formats that can be integrated together to best showcase your learning story, training if provided for all three formats which are there are:***

**PTD Pocket E-Portfolio Process – Institutional Desktop Publishing**

**KSU Career Services Online Career Portfolio - Institutional  
Internet/password**

**ITS Web Folio - Institutional Internet**

**Samples of the PTD Pocket E-Portfolio Student Samples\***

***For more information consult:***

<http://ptd.kennesaw.edu/eportfolio/samples.html>

*\*The e-portfolios displayed below are the sole property of their respective owners and do not necessarily reflect the views or opinions of the Presentation Technology Department or Kennesaw State University. The Department of University Studies at Kennesaw State University has obtained written permission to use the e-portfolios displayed below; all other rights reserved.*

### **Elena Smirnova, Kennesaw State University**



### **Bethanie Izar, Kennesaw State University**



**Sample page of the KSU Career Services: Online Career Portfolio:**  
Career Services Online Career Portfolio Sample (*institutional internet/password*)

<http://kaplan1.kennesaw.edu/Guest/GuestMenu.asp?ValuesPassed=6657645247756573742F31304A62506D>

#### **Organizational**

I learned how to manage my time through this course and became better able to take 4 classes and have a part-time job.

#### **Teamwork**

Worked in a group of 4 other classmates on a research project concerning freshmen living on campus.

POWERPOINT: [WORK VALUES](#)

#### **Skills Developed**

#### **Communication**

Had to present a speech on coping with college life to a group of 20 classmates.

#### **Organizational**

**Sample of the ITS Web Folio:**

<http://students.kennesaw.edu/windex/webindex.html>



## Student Web Pages

If your name is not listed below, please e-mail [webmaster@students.kennesaw.edu](mailto:webmaster@students.kennesaw.edu)

[\[A\]](#) [\[B\]](#) [\[C\]](#) [\[D\]](#) [\[E\]](#) [\[F\]](#) [\[G\]](#) [\[H\]](#) [\[I\]](#) [\[J\]](#) [\[K\]](#) [\[L\]](#) [\[M\]](#) [\[N\]](#) [\[O\]](#) [\[P\]](#) [\[Q\]](#) [\[R\]](#) [\[S\]](#) [\[T\]](#) [\[U\]](#) [\[V\]](#) [\[W\]](#) [\[X\]](#)  
[\[Y\]](#) [\[Z\]](#)

### **Part Three:**

**Folio Thinking with Web 2.0:**  
*Folio Thinking in Community*





## Part Four:

### **KSU 1101/1102 College Portfolio Process Internet Tutorial: Web 1.0 & Web 2.0\***

*\*You can walk yourself through the design and delivery process of your college e-portfolio*

### **KSU Web 1.0: Folio Thinking Individually**

***The College Portfolio Handbook:  
Folio Thinking for First Year Success to Global Citizenship***

**Dr. Joan E. Leichter Dominick**  
**Director of Portfolios for Student Success Programs &**  
**The Senior-Year Experience Program**  
<http://ksuweb.kennesaw.edu/~jdominic/>  
<http://www.joandominck.com>  
<http://ksuweb.kennesaw.edu/~jdominic/>  
<http://www.eport2passport.com>



September 12, 2006

**Kaleidoscope Metaphor for the E-Portfolio by Dr. Joan E. Leichter Dominick, 2004.**

<http://www.eport2passport.com/journal/eportjournal.php>

**E-Portfolio as Kaleidoscopic Process: Reflective View from Self to Global Society**

Just as a kaleidoscope needs light to view the endless possibilities of visual combinations of the colored glass, an e-portfolio provides the illumination for the learner to view the endless possibilities of the potential views and connections of her/his learning experience from self to global society.

Dr. Helen Barrett, international academic leader in the e-portfolio process, is posting metaphors people develop for the E-Portfolio Process. She has chosen my kaleidoscopic metaphor for her posting list. Go to her website at: <http://www.helenbarrett.com> for more metaphoric descriptions of e-portfolios. My e-portfolio metaphor is quoted on the James Cook University Website on the e-portfolio development page.

<http://www.jcu.edu.au/office/tld/teachingsupport/portfolios.shtml>

**Part One: Creating the Reflective Portfolio/Private Portfolio**

- ❑ What is FolioThinking?

<http://www.eport2passport.com/journal/eportjournal.php>

Creating Your Reflective Portfolio using. Files.Kennesaw.Edu

<http://its.kennesaw.edu/>

- ❑ Using the RACCE College Portfolio Process:

Reflect+Assess+Collect+Connect+Express

<http://edtech.kennesaw.edu/21c/>

<http://edtech.kennesaw.edu/21c/racce.htm>

- ❑ KSU 1101/1102 Learning Outcomes for the College Portfolio:

These distinct learning outcomes can be documented and showcased in your e-portfolio. The learning outcomes are: *Study Skills, Academic/Cognitive Skills, Critical Thinking Skills, Connections with Faculty, Connections with Peers, Out-of-class Engagement, Knowledge of Campus, Knowledge of Academic Services, Managing Time & Priorities, Knowledge of Wellness, and Global Perspectives*. For more information on the KSU 1101/1102 Learning Outcomes, consult:

[http://ucac.kennesaw.edu/FYE\\_sub.html](http://ucac.kennesaw.edu/FYE_sub.html).

- ❑ The College Portfolio Handbook: From Student Success to Global Citizenship

Table of Contents:

By Dr. Joan E. Leichter Dominick and Dr.M. Leigh Funk, 2004.

<http://www.eport2passport.com/scholarship/prenhall/tableofcontents3.htm>

*Chapter One: Honor Your Learning by Creating a College Portfolio*

<http://www.eport2passport.com/scholarship/prenhall/Chapter1.doc>

*Chapter Two: Understand Your Learning: Producing Your*

Reflective Portfolio: Reflect + Assess + Collect

<http://www.eport2passport.com/scholarship/prehall/Chapter2.doc>

*Chapter Three: Connect Your Learning: Producing Your Best of Show Portfolio: Connect + Express*

<http://www.eport2passport.com/scholarship/prehall/Chapter3.doc>

- E-Portfolio: Passport to Global Citizenship

<http://www.eport2passport.com>

E-Portfolio: Passport to Global Citizenship:

*Authors: Dr. Joan E. Leichter Dominick, Dr. M. Leigh Funk, Dr. Dan Paracka, Mr. Ben Cope, & Ms. Jennifer Leifheit 2004.*

<http://www.eport2passport.com>

E-Portfolio: Passport to Global Citizenship- Resources:

*Resources for the design & delivery of the college e-portfolio*

<http://www.eport2passport.com/resources.html>

E-Portfolio: Passport to Global Citizenship – Global RACCE College

Portfolio Rubric: Integrating KSU International Learning Initiatives:

<http://www.eport2passport.com/word/RACCE.doc>

E-Portfolio Passport to Global Citizenship: KSU & World Wide International Learning Resources:

<http://www.eport2passport.com/AAHE/bookmark.doc>

## **Part Two: Creating the Best of Show E-Portfolio/Public Portfolio:**

- Using the KSU Electronic Portfolio Buffet:

PTD Pocket E-Portfolio Process (*institutional desktop publishing*)

Presentation Technology Department

<http://ptd.kennesaw.edu/eportfolio/#>

<http://ptd.kennesaw.edu/Templates/html/facultydevel.html>

:

OnLine Career Portfolio: Career Services (*institutional internet/password*)\*

<http://careerctr.kennesaw.edu/Portfolio.html>

OnLine Career Portfolio Handbook:

<http://careerctr.kennesaw.edu/OLCPSteps.htm>

\*Adobe Acrobat: Learn to create PDF files for universal readability for your portfolio

Consult PTD Pocket E-Portfolio Process Overview: Adobe Acrobat  
<http://ptd.kennesaw.edu/eportfolio/#>

ITS Web Folio (*institutional internet*)

Instructional Technology Services

<http://its.kennesaw.edu/students.htm>

Creating Web Folio address:

<http://students.kennesaw.edu/>

KSU Web Publishing Software: ITS & PTD Provide Training for KSU Students:

ITS Training Seminars & Schedule: <http://its.kennesaw.edu/students.htm>

ITS: Using Netscape Composer: <http://www.netscape.com/>

ITS: Using Microsoft Publisher: <http://office.microsoft.com/en-us/FX010857941033.aspx>

PTD Training Seminars & Schedule:  
<http://ptd.kennesaw.edu/multimedialab/workshops.html>

PTD: Using Dreamweaver:  
<http://www.macromedia.com/software/dreamweaver/>

Master Storyboard: Integrating KSU E-Portfolio Buffet for KSU 1101:

*Design and delivery for the best digital showcasing of your learning story using the PTD Pocket E-Portfolio Process (institutional desktop publishing),*

OnLine Career Portfolio: Career Services (*institutional internet/password*), and ITS Web Folio (*institutional internet*) By Dr. Joan E. Leichter Dominick, 2004

<http://www.eport2passport.com/word/master1101.doc>

❑ Best of Show E-Portfolio Samples:

Career Services Online Career Portfolio Sample (*institutional internet/password*)

<http://kaplan1.kennesaw.edu/Guest/GuestMenu.asp?ValuesPassed=6657645247756573742F31304A62506D>

PTD Pocket E-Portfolios Samples (*institutional desktop publishing*)

<http://ptd.kennesaw.edu/eportfolio/samples.html>

<http://edtech.kennesaw.edu/21c/samples.htm>

<http://www.kennesaw.edu/globalinstitute/globalcitizen.htm>

<http://www.eport2passport.com/pdf/BethanieIzar.pdf>

ITS Web Folio Samples (*institutional internet*)\*

Student Samples from KSU 1101, KSU 4401, PTD Star Students (*former KSU 1101 & KSU 4401*)

*\*showcasing samples of integration the KSU E-Portfolio Buffet Platforms*

<http://www.eport2passport.com/webfolios.html>

Jennifer Leifheit: Presentation Technology Trainer & Developer, created PTD Pocket E-

Portfolio Process for Dr. Joan E. Leichter Dominick courses.

KSU Graduate – *Bachelors Degree*, Georgia State University - *Masters Degree*

<http://ptd.kennesaw.edu/~jleifheit/>

Ben Cope: Presentation Technology Trainer & Developer, created PTD Pocket E-Portfolio Process for Dr. Joan E. Leichter Dominick courses.

KSU Graduate – *Bachelors Degree*, Georgia State Graduate Student – *Masters Degree*

<http://www.student.gsu.edu/~bcopel/>

### **Beyond Campus E-Portfolio Examples & Career in Folio-Thinking:**

Reel Biography: Company in New York City that creates E-Portfolios for Career, Companies,

And families – contributed by Mr. Joseph T. Leichter, BA, MA.

<http://www.reelbiography.com/>

Dave Werner: Portfolio Center in Atlanta. Sample of a reflective and best of show graphic

Graphic design portfolio – contributed by Mr. Ben Cope, EPOC Designs.

<http://www.okaydave.com/>

Dr. Helen Barrett's E-Portfolio Website: Examples from Higher Education & Beyond:

<http://electronicportfolios.com/ALI/samples.html>

## **KSU Web 2.0: Folio Thinking in Community: Vista & Files.Kennesaw.edu**

**Consult:** <http://its.kennesaw.edu/>

### **Vista**

Many courses at KSU use Vista for online courses, hybrid courses, and real time courses with Vista Support. You can use this for creating portfolios that are set up as part of a community. You can use discussion

boards and share ideas in community. This can become part of your ePortfolio individually and in a community portfolio.



Welcome to the GeorgiaVIEW Vista Online Support Center for the **University System of Georgia**. Our Support Representatives are available 24 hours a day, 7 days a week, 365 days a year.

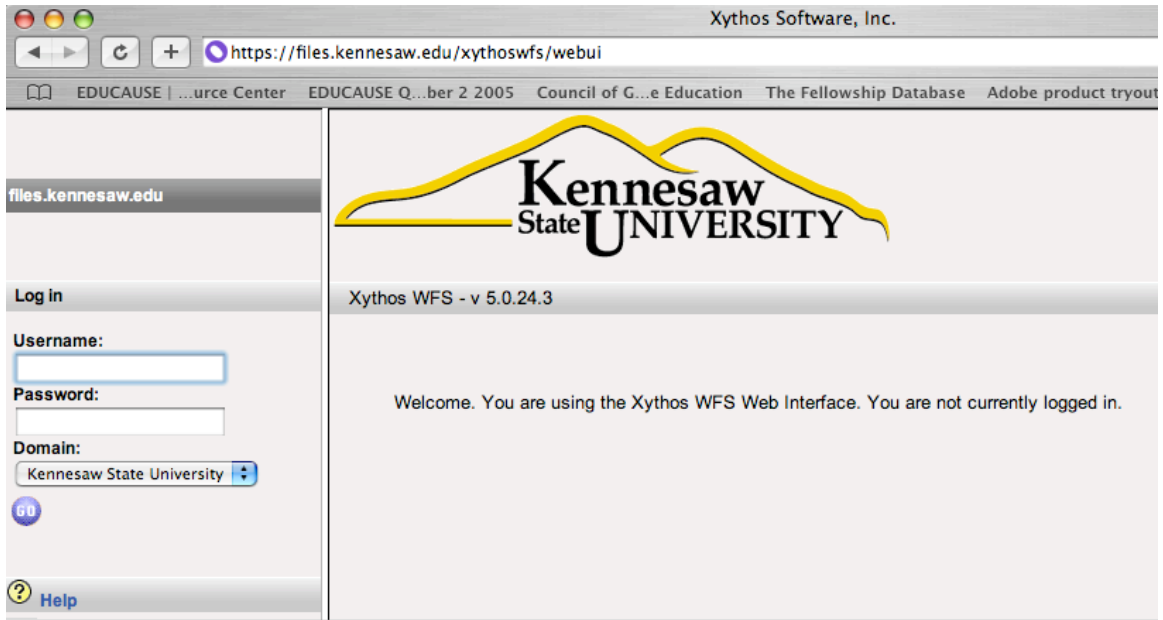
**Consult:** <https://supportcenteronline.com/ics/support/default.asp?deptID=3094>

## **Files.Kennesaw.Edu**

Direct quote from <http://its.kennesaw.edu>:

Files.Kennesaw.Edu is a new personal web-based file storage and sharing system !! This new enhanced personal storage space system has many benefits:

- This is a web-based system - your files are available anytime, anywhere
- Same NetID authentication as other campus applications
- Platform independent
- Secure file storage and access for faculty, staff and students
- Allows on-line file sharing and collaboration
- Allows you to manage your files and give different levels of access to others
- Allows you to share files with specific groups of people
- Allows for tracking changes to files
- 1 GB space per person for faculty and staff; 250 MB for students
- Provides an excellent alternative to sending large email attachments
- Presented by the ITS Technology Outreach Team “



### Part Five:

#### Reflection Plan for your *KSU 1101/1102 College Student Portfolio\**

*\*Used to assist you in archiving your development and reflections of the Learning Outcomes for course and learning community*

Name: \_\_\_\_\_

<b>KSU 1101/1102 Learning Outcomes:</b> <a href="http://ucac.kennesaw.edu/FYE_sub.html">http://ucac.kennesaw.edu/FYE_sub.html</a>	<b>Reflection Plan for your <i>College Student Portfolio</i>:</b>
<b>Course Modules for KSU 1101/1102 Learning Outcomes:</b> <i>Check the Course Module topic reflection:</i> <ul style="list-style-type: none"> <li>○ Study Skills</li> <li>○ Academic/ Cognitive Skills</li> <li>○ Critical Thinking Skills</li> <li>○ Connections with Faculty</li> <li>○ Connections with Peers</li> <li>○ Out-of-class Engagement</li> <li>○ Knowledge of Campus</li> <li>○ Knowledge of Academic Services</li> <li>○ Managing Time &amp; Priorities</li> <li>○ Knowledge of Wellness</li> <li>○ Global Perspectives</li> </ul>	

<p><b>Learning Experience &amp; Outcomes:</b>  <i>What did you learn from this course module? What actions will you take based on this learning experience?</i>  <i>What are your plans for Academic Major Coursework, General Education, Elective Coursework, Internship/Coop, Scholarship Application, Study Abroad, Employment/Training, Academic Organization, Student Activity, Community Service/Volunteer Work,</i></p>	
<p>Plans for your College Student Portfolio-  Integrating KSU College E-Portfolio Formats: <i>Master Storyboard: Integrating KSU E-Portfolio Buffet for KSU 1101/1102: Design and delivery for the best digital showcasing of your learning story using the Online Career Portfolio (OLCP)</i>  <i>Institutional Internet/password,</i>  PTD Pocket E-Portfolio Process <i>Institutional Desktop Publishing,</i> and ITS Web Folio: <i>Institutional Intranet</i>  By Dr. Joan E. Leichter Dominick, Copyright 2004  <a href="http://www.eport2passport.com/word/master1101.doc">http://www.eport2passport.com/word/master1101.doc</a></p>	
<p><i>Files.Kennesaw.edu (KSU Web 2.0)</i>  Manage and share files in community as part of your ePortfolio</p>	
<p><i>Online Career Portfolio (OLCP) (KSU Web 1.0)</i>  Institutional Internet/password  What will you include in the Online Career Portfolio?  <a href="http://careerctr.kennesaw.edu/Portfolio.html">http://careerctr.kennesaw.edu/Portfolio.html</a></p>	
<p><i>PTD Pocket E-Portfolio Process: (KSU Web 1.0)</i>  Use Institutional desktop publishing  To customize <i>OLCP –i.e. Volunteer Experience &amp; create PDF files for OLCP</i>  <a href="http://ptd.kennesaw.edu/eportfolio/#">http://ptd.kennesaw.edu/eportfolio/#</a></p>	
<p><i>ITS Web Folio: Institutional Intranet (KSU Web 1.0)</i>  To customize <i>OLCP</i>  <a href="http://:students.kennesaw.edu/">http://:students.kennesaw.edu/</a></p>	



<p><i>College Portfolio Resources: Mission (First-Year to Global Citizen), Design, Format, Samples</i>  <a href="http://www.joandominick.com">http://www.joandominick.com</a></p>	

**Reflection Questions:**

1. What did you learn from this chapter on creating your KSU 1101/1102 College E-Portfolio? How can *Folio Thinking* help you honor, understand, and connect your learning?
2. More specifically, what did you learn by reviewing the KSU 1101/1102 College E-Portfolio Process Internet Tutorial (Part Three)? What plans do you have for the design and development of your KSU 1101/1102 College E-Portfolio as a result of reviewing the tutorial? Consult: <http://www.eport2passport.com/resources.html>
3. What do you want to showcase about yourself in your KSU 1101/1102 College E-Portfolio? What do you want to showcase for before, during, and after college?
4. How will you integrate the KSU 1101/1102 Learning Outcomes in your College E-Portfolio? Consult Part Four: Reflection Plan for your *KSU 1101/1102 College Student Portfolio*. Do you want to set up a “tabbing” system in your KSU Career Services Online Career Portfolio? Do you want to showcase one of the learning outcomes on the PTD Pocket E-Portfolio? Do you want to create an ITS Web Folio to keep a Blog of your learning outcome development and reflections? The Learning Outcomes are: *Study Skills, Academic/Cognitive Skills, Critical Thinking Skills, Connections with Faculty, Connections with Peers, Out-of-class Engagement, Knowledge of Campus, Knowledge of Academic Services, Managing Time & Priorities, Knowledge of Wellness, and Global Perspectives*. For more information on the KSU 1101/1102 Learning Outcomes, consult [http://ucac.kennesaw.edu/FYE\\_sub.html](http://ucac.kennesaw.edu/FYE_sub.html).
5. As a result of reviewing and/or using the technology available at KSU for creating your KSU 1101/1102 College E-Portfolio, how did the digital technology impact on understanding and showcasing your learning story? Which College E-Portfolio formats or combinations best showcase your learning story? Consult:

PTD Pocket E-Portfolio Process (*institutional desktop publishing*)

Presentation Technology Department

<http://ptd.kennesaw.edu/eportfolio/#>

<http://ptd.kennesaw.edu/Templates/html/facultydevel.html>

:

OnLine Career Portfolio: Career Services (*institutional internet/password*)

<http://careerctr.kennesaw.edu/Portfolio.html>

OnLine Career Portfolio Handbook:

<http://careerctr.kennesaw.edu/OLCPSteps.htm>

ITS Web Folio (*institutional internet*)

Instructional Technology Services

<http://its.kennesaw.edu/students.htm>

Creating Web Folio address:

<http://students.kennesaw.edu/>

**6. Using the Master Storyboard for KSU 1101/1102, what are your plans for creating your KSU 1101/1102 College E-Portfolio? Consult:**

<http://www.eport2passport.com/word/master1101.doc>